

BLACK SLATE



Concrete Pavers • Stone Pavers • Tiles • Garden Walls & Edging
Retaining Walls • Concrete Sleepers • Concrete Blocks • Wall Cladding

BLACK SLATE



BEST PRICE >>>
promise terms and conditions apply

FEATURES

- Natural stone
- Slate finish
- Strong and durable
- Salt and stain resistant
- Pavers do not need to be sealed
- Free samples available

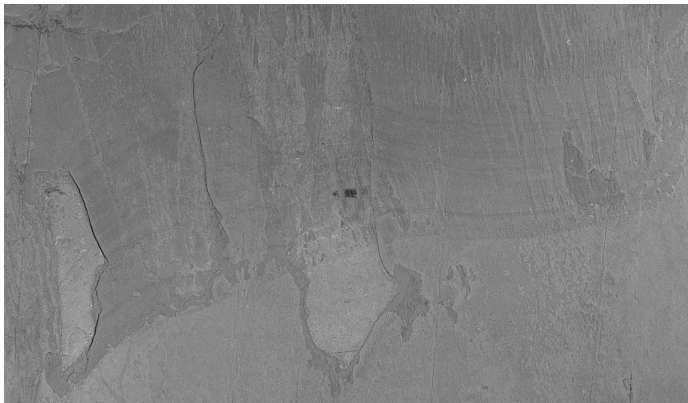
SUITABLE FOR

- Entertaining areas
- Patios and alfresco
- Courtyards
- Garden paths and walkways
- Stepping stones

Specifications	Size	No. per m ²	Weight per m ²	m ² per pallet OR unit
Paver	400 x 400 x 30mm	6.25	86.25kg	9.92

COLOUR RANGE*

Black Slate



*Colours are an indication only. Always sight physical product colour samples before purchase.

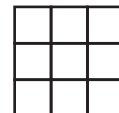
*Due to thickness variations of natural stone we recommend laying with a 3-5mm gap using a tile spacer on a soft sand base. See our *How To Lay Wet Cast Concrete Pavers and Natural Stone Pavers On Sand* guide for details.



www.australianpaving.com.au

australianpavingcentre

UNIFORM APPEARANCE



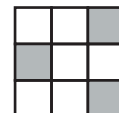
V1

SLIGHT APPEARANCE



V2

MODERATE APPEARANCE



V3

SUBSTANTIAL APPEARANCE



V4